

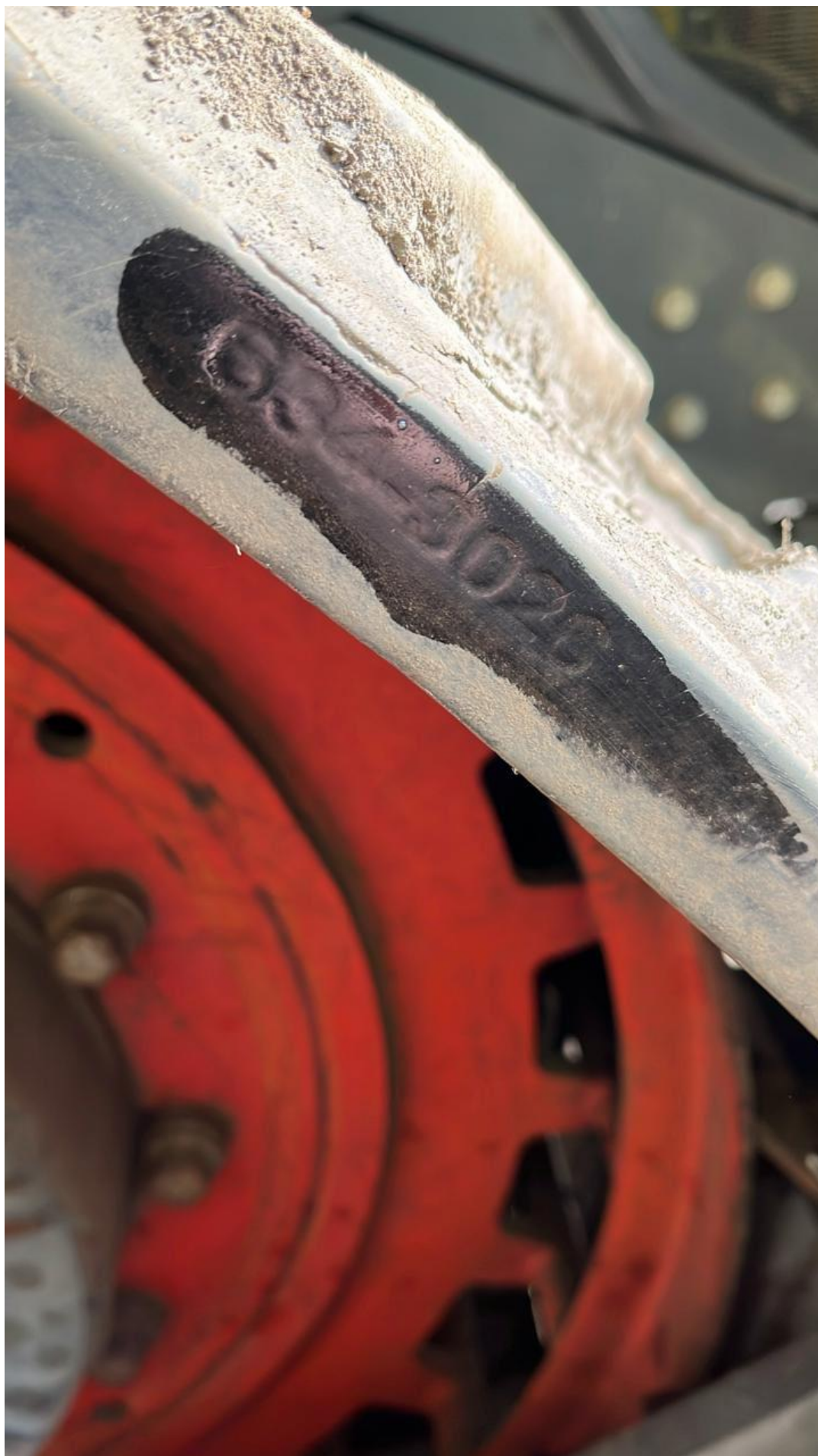


Rev	USR	Date	Revised Date	Part name	Part number	Revision
A	Mch	2018/10/31	12/27/2017		6080336	A
			Created Date			
			CP			
			Released Date			
			KBR			

Pos	Qty	Description	Article code	OEM Code	Remarks
1	1	ASSY_F_1060X2270_L	6085310	A	
2	1	TRACK_CP_39T_X_782MM	9007233	0	
3	20	NUT_M16_ZN	7500706	0	210 Nm
4	20	WASHER_M16_ZN	7500709	0	
5	68	COLLAR_NUT_M18X1.5_10.9_ZN	7501470	0	449 Nm
6	10	SHAFT_CLAMP_M16_9.8_ZN	2011073	0	210 Nm
100	1	SERIAL_NUMBER_PLATE_TRACKS	4001984	0	
400	0	XXXXXXXXXXXXX_COLOR_A_XXXXXXXXXXXXX	0000400	0	
401	2	SHAFT_LS24_STC_275_0305	2015247	B	
402	3	SHAFT_LS24_STC_180_0210	2015466	B	
403	6	WHEEL_PL_0300_L248	2015513	A	
500	0	XXXXXXXXXXXXX_COLOR_B_XXXXXXXXXXXXX	0000500	0	
501	4	WHEEL_PL_0550_L275	2015536	A	

Weight(g)	Physical number	Serial	Size
2023kg	10070	1 / 1	A3

Part name	Part number	Revision
TR_U_F_1060X2270_762_L	6080336	A



ZUIDBERG

WWW.ZUIDBERG.COM
BUITENVELD 5 - 8307 DE
ENS - THE NETHERLANDS

Year of Production

2021

CE

40101230

Serial Number

FR

Mount Pos.

XERION 5000 TRAC TS FIN 78400125 K18437